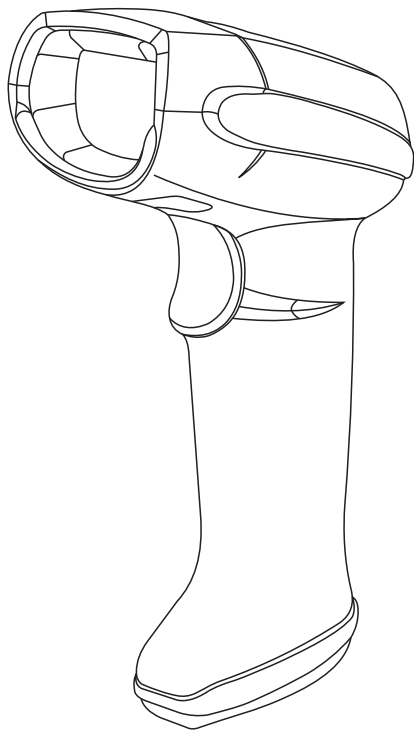


unitech

Laser Barcode Scanner Quick Guide



Model: MS831

Note

- ☞ A standard packing includes a scanner, an USB cable and a hand free stand.
- ☞ Use a dry and soft cloth to clean the scanner body if needed.

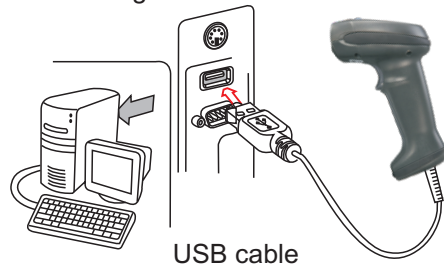
Parts of the scanner



- ① Beeper
- ② LED
- ③ Exit window
- ④ Trigger
- ⑤ Cable interface port

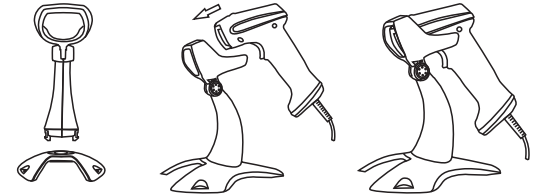
Installing the scanner

1. Switch off the host device;
2. Refer to the pictures from below, connect the host device with the scanner;
3. Ensure that all connections are properly secured.
4. Switch on the host device. When the installation is successful done the scanner will sound 2 short beeps and the LED light on it will flash in RED colour and off again.



USB cable

Assembling the stand



Note

1. See the figure above, tighten the screws.
2. Bend the neck to the desired position for scanning.
3. Buckle mounting: put the four buckles against the four holes in the base and press down firmly until the snap is fully inserted into the four holes and firmly.

Reading techniques

1. Press and hold the trigger, an aiming beam is projected which is suggested to be centered over the barcode.
2. In general, the optimal reading range is limited to 5-7 cm regardless of the size of the minimal element of the barcode.
3. On a successful reading, the scanner will beep once, and the illumination and aiming patterns are turned off. Then the scanner transmits barcode message to the host device.

Quick setting



Start



End

System setting:

1. Scan "Start" code;
2. Scan needed settings function's code;
3. Scan "End" code.

Example:

"Scanner setting as "Factory Default",
"Code 39 none transmission start and end charaters",
"Interleaved 2 of 5 none check", add suffix "Enter".

1. Keyboard layout



Belgian



French



Denish



Russian



Italian



Spanish



Slovakian



Turkish Q



Turkish F



UK



Canadian



Janpanese



German

Alt+keypad: the scanner will output code result as pressing Alt+numeric key (on keypad). Note that the Num Lock control key must be ON. This setting can be specially adapted for use with different language of keyboard layout.



Alt+Keyboard

2. Enable / Disable auto-detection

Press the trigger 10s to Enable or Disable auto-detection

3. Scanning mode



Manual



Auto-detection



Auto-continous

4. Inter-character delay



Default



15ms

5. Add suffix



CR+LF



CR



LF



LF+CR



TAB

6. Factory default



7. Version



Regulatory Compliance Statements

unitech Electronics co., Ltd herewith declares that the unitech product is in compliance with the essential requirements and all other provisions of the the EMC 2004/108/EC directive and the Low Voltage 2006/95/EC directive.

The declaration of conformity is available for download at: <https://portal.unitech.eu/public/Safetyregulatorystatement>

RoHS Statement

This device conforms to RoHS (Restriction Of Hazardous Substances) European Union regulations that set maximum concentration limits on hazardous materials used in electrical and electronic equipment.

Waste Electrical and Electronic Equipment (WEEE)

unitech has set up a policy and process to meet the EU directive 2002/96/EC and update 2003/108/EC concerning electronic waste disposal.

For more detailed information of the electronic waste disposal of the products you have purchased from unitech directly or via unitech's resellers, you shall either contact your local supplier or visit us at: <https://portal.unitech.eu/public/WEEE>

Note: 1. More details refer to User Manual. 2. For better readability, please print this document with laser printer. 3. Version: MS831_QG_EN_V1