

uTransfer Manual

Introduction:

uTransfer is a simple data transfer application for Unitech's DOS-based mobile computers. uTransfer allows users to transfer data collected on a portable terminal to a Window's desktop with just one click. uTransfer can be used with Unitech's HT580, HT630 and PT630 mobile computers. uTransfer will run on Windows platforms 95, 98, ME, 2000, NT, XP and Vista.

Installation:

You must be logged on to your PC as an Administrator to install uTransfer. First, on www.ute.com, go to either the HT580 or HT630 product page. Go to the **Downloads** page and then click **Download Now** for the uTransfer software. Save the file to your PC. Unzip the file and select **Setup**, then click **Run**. Follow the installation instructions prompted on your PC to complete installing uTransfer.

Transferring Data:

After collecting the data you wish to transfer on your HT580, HT630 or PT630, connect the device to your PC using the communication cable. If you are using a USB cable or a USB converter, make sure you have the correct driver installed on your computer.

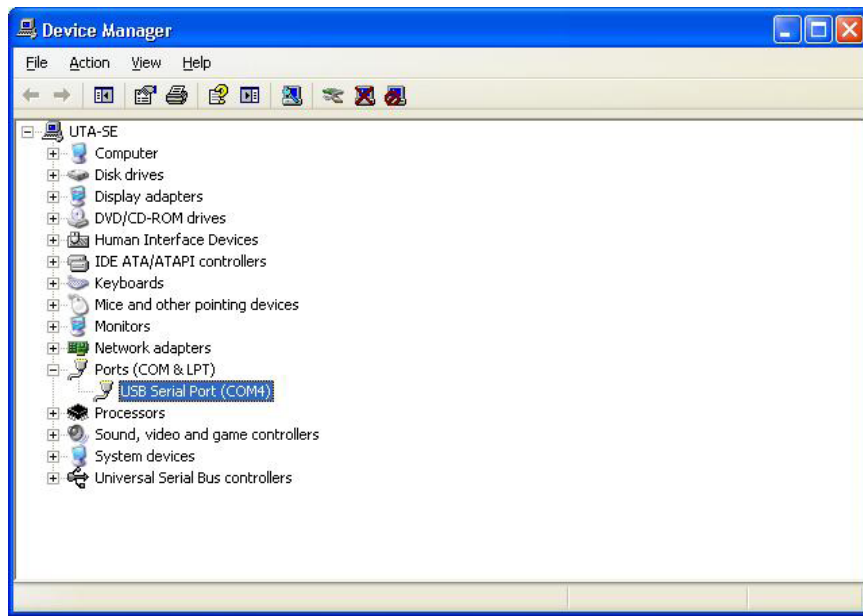
- USB communication cable and converter driver:
http://www.ute.com/files/software/48_RS232%20to%20USB%20driver.zip
- Installation guide for the HT630 USB cable:
ftp://ftp.ute.com/Support/HT630/HT630_USB_QSG_PDF.pdf

If you are using the HT580, make sure the unit is turned on before going to the next step. The HT630 and PT630 do not need to be turned on to transfer data.

The files you wish to transfer from your HT device must be in the default FORM.DAT format to successfully transfer to your desktop.

Open uTransfer on your PC. Click the **Transfer** button in the uTransfer window to instantly transfer the data. It will search for a COM port from 1 to 20.

- Make sure your device is set to a COM port less than or equal to 20 in the Device Manager. To get to your Device Manager, go to the PC's Control Panel, select **System**, then **Hardware**, then **Device Manager**. The COM port will be listed.



When uTransfer finishes searching all 20 COM ports, a message will display below the Transfer button showing you how many files have downloaded to your PC.



If you have the **Sync Date and Time** option selected, the device will sync the day and time of the file with the PC.

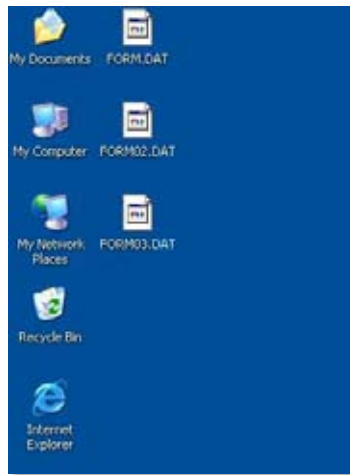
Sync Date and Time on Terminal with PC

If you wish to delete the data file on the device after it has been transferred to the PC, select the **Auto Delete Data** option before clicking Transfer.

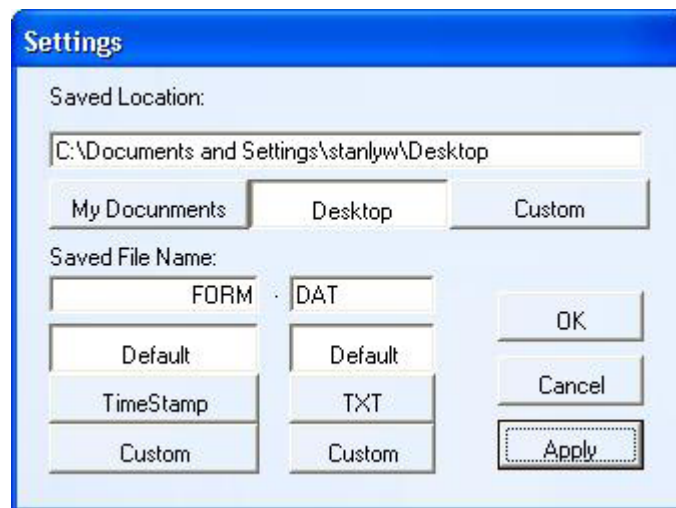
Auto Delete Data from Device After Transfer to PC

By default, the file will be downloaded to your desktop with the file name FORM.DAT.

- If you have more than one device connected to the computer when you click Transfer, the second file will be named FORM02.DAT, and the third file will be FORM03.DAT, etc.



You may change the location of the file, as well as the file name and its extension in the Settings window. Click **Apply** or **OK** to save the changes.



- Default file name is: FORM
- Default extension name is: DAT
- TimeStamp will be in the format of: YYYYMMDDHHMMSS
- If you select Custom in the settings options, you can change the location, file name or file extension. Make sure the custom location is valid or the file will be lost during the transfer.