

## PT630 Beginner's Guide:

The PT630 is a programmable portable terminal capable of scanning a multitude of barcode symbologies. The most common use for this device is **Inventory**. Users would like to scan barcodes in their warehouse, enter quantities, and transfer the data to their PC's for interpretation. The PT630 comes ready for this application. This application is commonly known as "**Form Caching**". The following steps instruct the user how to setup the PT630 for **Form Caching**:

1. Turn Device **ON** and wait for BIOS screen
2. Press and hold **CMD**
3. Enter 2. TER
4. Enter 2. Form Caching
5. Begin Scanning
6. Press **ESC** once you are finished scanning in inventory to return to Main Menu

1 & 2

```
PT630 BIOS V1.91
MEM 512 KB
>
```

3

```
1. RUN      2. TER
3. COM      4. DIR
5. ERA      6. TYP
7. CPY      8. SET
```

4

```
<< TERMINAL MODE >>
1. TERMINAL MODE
2. FORM CACHING
```

## FAQ:

1. When user tries to perform step 5 and scan, there is no red scanner emitted.

**ANS:** The scanner might be turned OFF. Press **ESC** until you are at step 1 and follow the steps necessary to get to step 3. Once user reaches this step, press 8. SET. The first option will show a scanner and "enabled/disabled". Press **LEFT** or **RIGHT ARROWS** and press **ENT** to enable the scanner. Press **ESC** when done.

2. There is a "QTY:" option that user wants to disable. User would prefer "ITEM:"

**ANS:** See below to edit the "**Form Caching**" application under "**EDIT FORM CACHING**"

3. User is unable to scan Barcodes or Barcodes with Alpha-characters

**ANS:** See below to edit the "**Form Caching**" application under "**EDIT FORM CACHING**"

## Transfer Scanned Items to PC:

Data may be transferred *to* and *from* the PT630 with UTE's PTCComm Manager which can be found on the CD that accompanies the device or at the following website:

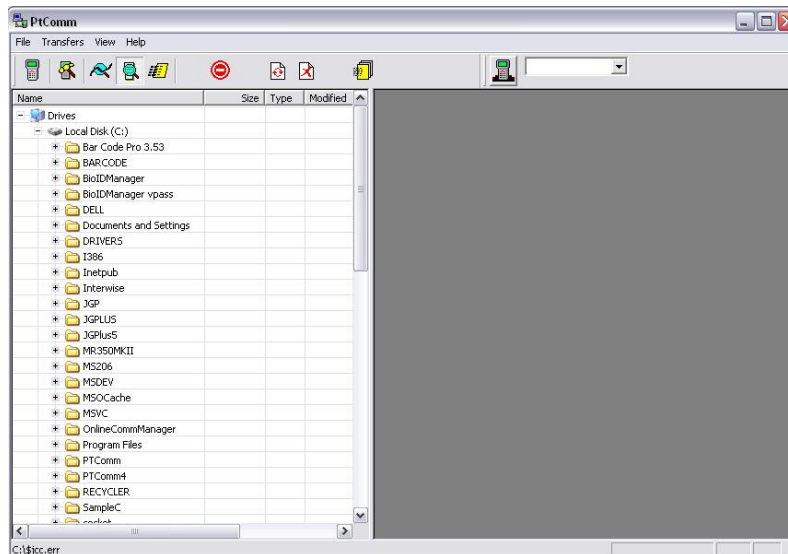
[http://www.ute.com/downloads.php?product\\_id=52](http://www.ute.com/downloads.php?product_id=52)

PTComm Manager must be installed on the PC in order to communicate with the PT630.

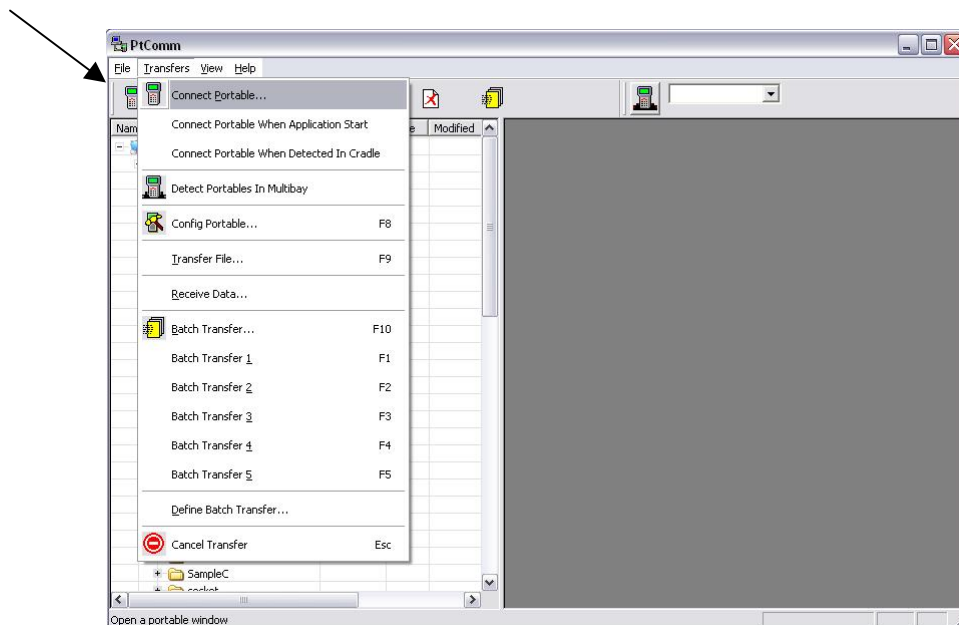
Once PTCComm Manager is installed follow these steps to transfer the data file to the PC:

NOTE: The PT630 can be ON or OFF and these steps should successfully connect the PT630 to the PC

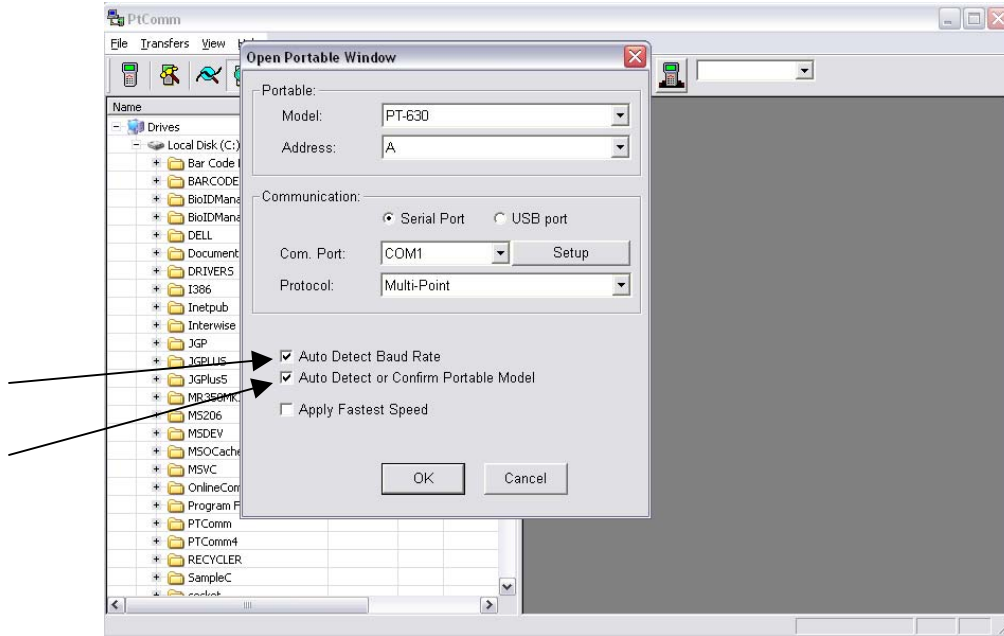
1. Connect the PT630 to the back of the PC via RS232 or Set the PT630 on the PT063 cradle and ensure the cradle is connected to the PC and that it has power.
2. Open PTCComm Manager



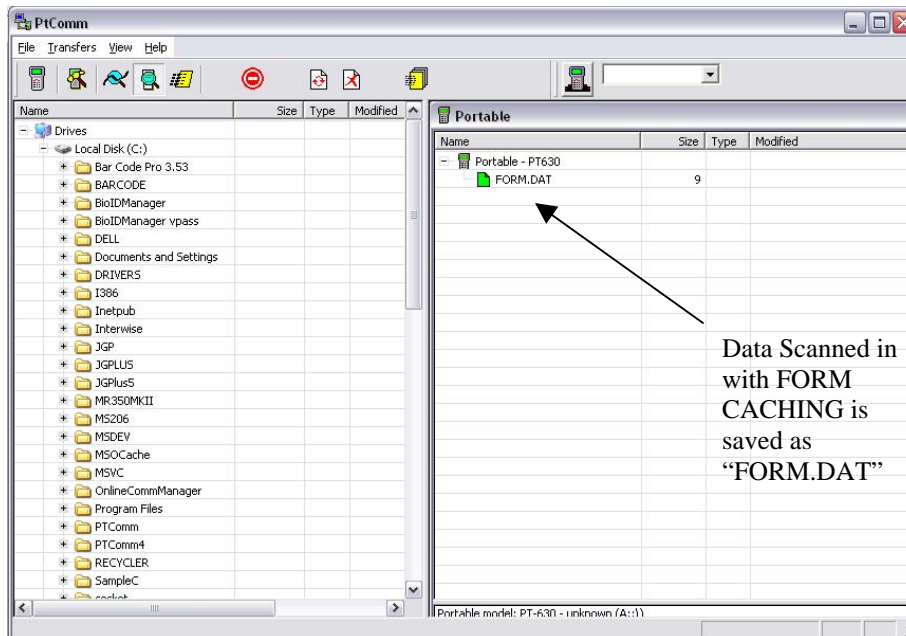
3. Click on the icon under "File" or click on "Transfers" -> "Open Portable"



- Verify the **MODEL**, **ADDRESS**, and **COM. PORT**. Most importantly, to ensure a successful connection, select **BOTH** “Auto Detect Baud Rate” and “Auto Detect or Confirm Portable Model” and press OK



- The PT630 should BEEP even if it is OFF, PtComm Manager will automatically turn on the device and connect to it. If there is data in the device, it will be displayed under the Portable Name. Click and drag the “FORM.dat” file to a folder on the left hand side of the screen (the PC).



## Edit Form Caching:

Form Caching can be edited to the user's preference. Many things can be changed in the process. The following steps will display how to remove the "QTY:" prompt from the application so that the user will only be prompted for an ITEM.

1. Turn off the Device
2. Press and hold **CMD** and **LEFT ARROW**. While holding these two buttons, press the **ON** button. The PT630 should turn on and a new screen with three options should appear.
3. Select "SUPERVISOR".
4. Enter the password "630" and press **ENT**
5. Select 4. FORM
  - a. If a screen warning that FORM.DAT contains data, make sure user has saved all scanned data to the PC using PTComm Manager before proceeding. (See above **Transfer Scanned Items to PC**)
6. The first screen will display "ITEM:" Press **ENT** to confirm this prompt.
7. Max Data length will need to be confirmed. A safe length is 48.
8. Min Data length will need to be confirmed next. A safe length is 1.
9. Data Type can be Numeric or Alphanumeric. If user scans barcodes with both letters and number, option 2 is best; otherwise option 1.
10. Device Type designates how the data will be received. "Both" is a good choice.
11. This step is where "QTY:" will be removed. The screen should display "QTY", press **ESC NOT ENT!**
12. If step 11 is successful, the screen should prompt "Between Field".
13. Field Delimiter of "comma" is good choice
14. Record Delimiter of 3.CRLF is default and preferred
15. Date stamp and Time stamp are next. This is up to the user, but to disable both choose option 1 at the prompts.
16. Finally Field Delay of 0 is a good setting.
17. Press **ESC** and try out the new settings.

2.

```
<<START MENU>>
1. SUPERVISOR
2. WARM START
3. COLD START
```

4.

```
<<SUPERVISOR>>
PASSWORD:
XXX
```

5.

```
1. DEV      2. TERM
3. MEM      4. FORM
5. PWR      6. PSWD
7. SYS      8. DIAG
```

5a.

```
File FORM.DAT
has data !
Overwrite ?
1=YES/0=NO
```

6.

```
DEFINE FIELD 1
PROMPT (16 MAX)
ITEM:
```

7.

```
DATA LENGTH
MAX (1 - 48)
```

8.

DATA LENGTH  
MIN ( 1 - MAX )

9.

DATA TYPE  
1. NUMERIC  
2. ALPHANUM

10.

DEVICE TYPE  
1. KEY ONLY  
2. SCAN ONLY  
3. BOTH

**\*\*11. PRESS ESC!!!\*\***

12.

DEFINE FIELD 2  
PROMPT (16 MAX)  
QTY:

BETWEEN FIELD  
1. APPEND SCREEN  
2. CLEAR SCREEN

13.

FIELD DELIMITER  
1. ,                   2. ;  
3. SPACE           4. TAB

14.

RECORD DELIMITER  
1. CR  
2. LF  
3. CRLF

15.

DATE & TIME  
1. NONE  
.  
.  
.  
.

16.

FIELD DELAY  
( 0 - 6 ) ?